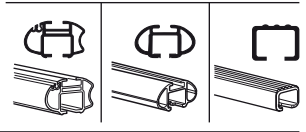


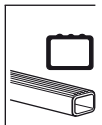
Kit 1355

SUBARU Justy, 5-dr MPV, 03-07

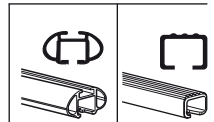
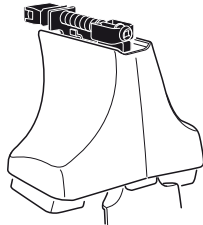
480R
754



480



750



xx kg
 xx lbs + 7 kg
 15,4 lbs = **Max. 45kg**
Max. 99 lbs

80 km/h 50 Mph 130 km/h 80 Mph
 40 km/h 25 Mph
km/h Mph

THULE + **Kit XXXX**

x4 x4 x4

480R/754

x4 x4 x4

480

x4 x4

750

x2	x2	x2	x2	x2
x2	x2	x2	x2	x2
x2	x2	x4	x2	x2
x4		x4		

148 x4 **04** x4 x1

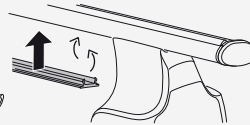
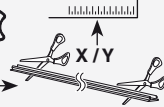
Kit



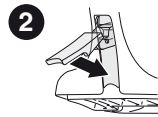
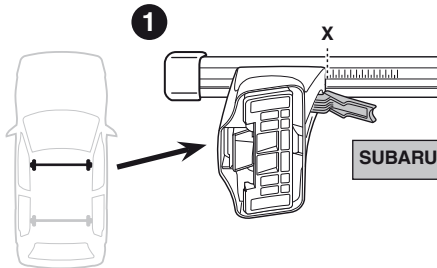
3



754

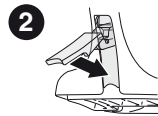
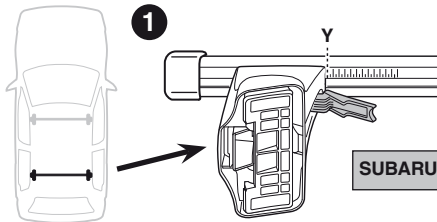


750



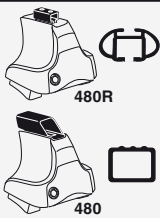
SUBARU Justy, 5-dr MPV, 03-07

X
35,5



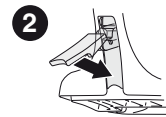
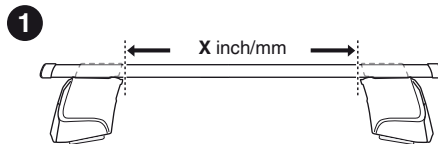
SUBARU Justy, 5-dr MPV, 03-07

Y
34



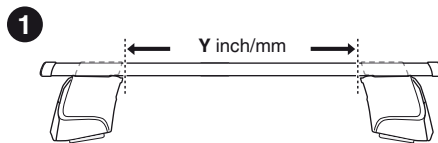
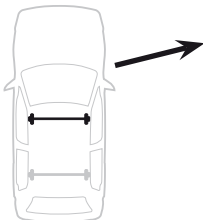
480R

480



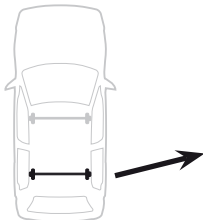
SUBARU Justy, 5-dr MPV, 03-07

X inch	X mm
39 5/8"	1006 mm



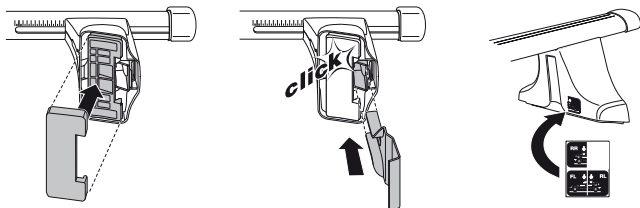
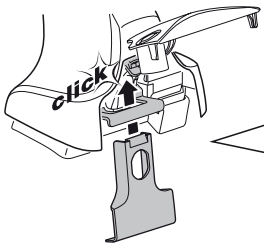
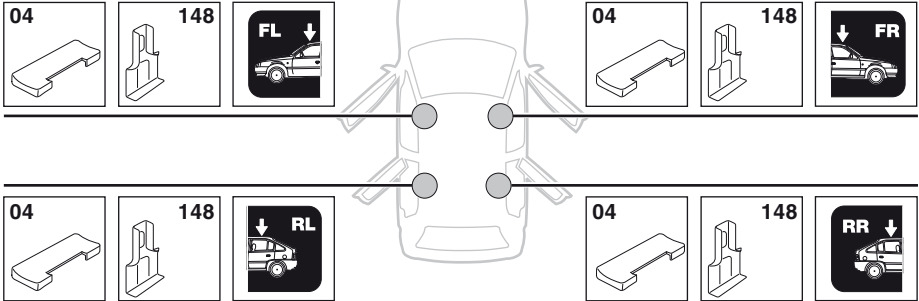
SUBARU Justy, 5-dr MPV, 03-07

Y inch	Y mm
39"	991 mm



4

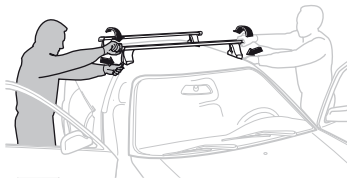
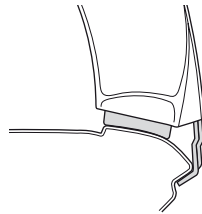
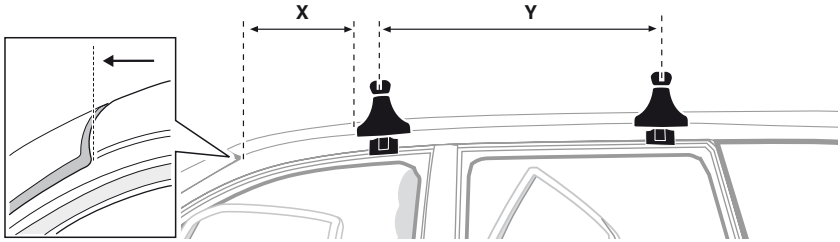
SUBARU Justy, 5-dr MPV, 03-07



5



	X mm	Y mm	X inch	Y inch
SUBARU Justy, 5-dr MPV, 03-07	250 mm	700 mm	9 ⁷ / ₈ "	27 ¹ / ₂ "



GB/US Tighten alternately

D Die Schrauben abwechselnd anziehen

F Serrer alternativement chaque côté

NL Afwisselend aan de linker- en de rechterkant aandraaien

I Alternare il serraggio delle viti

E Apretar alternativamente

PT Aperte alternadamente

S Dra åt växelvis

FIN Kierrä vuorotellen

EST Pinguldage vaheldumisi

LAT Pielieciet pamišus

LIT Užsukinėkite pakaitomis

PL Śruby dokręcaj naprzemiennie

RU Затягивайте попеременно

CZ Pokręťta багаžnika dokręcaj dokręcaj naprzemiennie.

SK Doťahujte striedavo

SLO Privijajte izmenično.

HR Naizmjenično zategnite

HU Egymástól függetlenül szorítandó

GR Σφιγγετε εναλλάξ

TR Dönüşümlü sıkın

中文 交替拧紧

한국어 번갈아 가며 조이십시오.

日本語 交互に締め付けてください。

ไทย ชันโนแบบสลับ

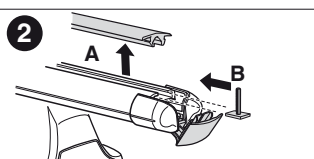
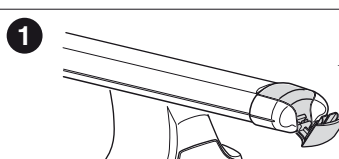
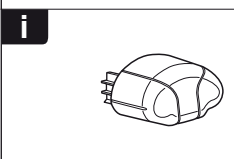
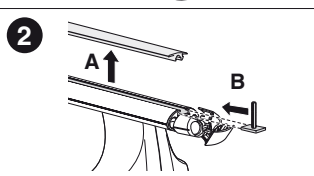
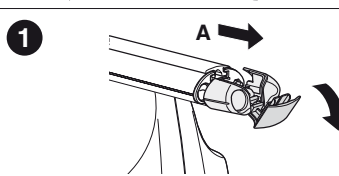
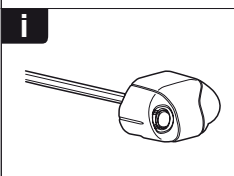
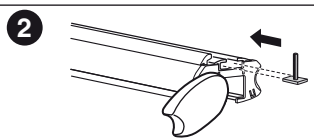
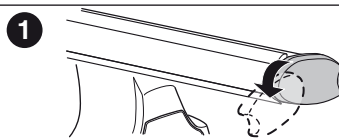
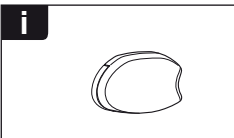
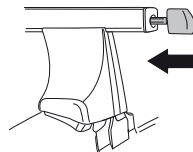
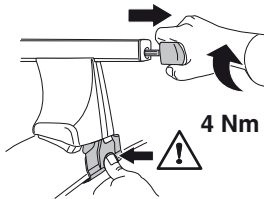
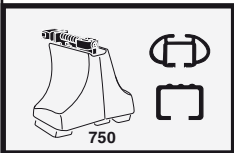
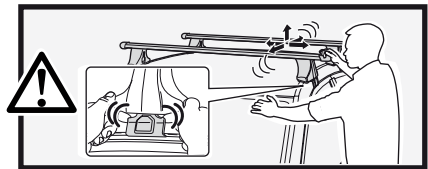
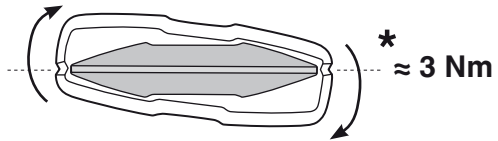
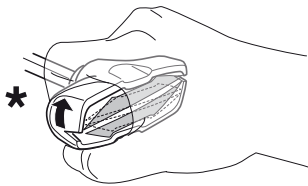
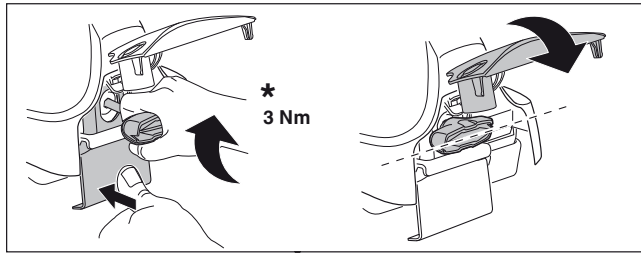
6



480R/754



480





THULE
SWEDEN
**ONE
KEY
SYSTEM**



- 544 (x4)
- 596 (x6)
- 588 (x8)
- NA 510 (x10)
- EUR 452 (x12)
- ASIA



WW ▶ Thule Sweden AB, Box 69, 330 33 Hillerstorp, SWEDEN
NA ▶ Thule Inc., 42 Silvermine Road, Seymour, Connecticut 06483, USA

info@thule.com
customer.service@thule.com

www.thule.com